



ALVAH
GROUP

ALVAH GROUP

DIVERSITY & INCLUSION

We take pride in our commitment to diversity & inclusion among all ideals and visions for the future.

ALVAH GROUP
1 Kaiser Plaza, Suite 650, Oakland CA 94612
www.alvahgroup.com



About Us

Through the sponsorship of PG&E, Alvah Contracting, founded in 2007 (now Alvah Group Inc.), is a Minority Business Enterprise (MBE) full-service electrical utility contractor. Alvah provides overhead, underground, storm response and network maintenance as well as traffic control and restoration services within the utility industry. We have safely been providing utility companies with start to finish electrical support and continue to maintain high quality work products for our customers.

Alvah seeks to maintain the best supply chain for the best customer solutions, while contributing to the economic growth of diverse and small businesses reflecting the communities we serve. We consider all suppliers that can bring us a competitive edge including Business Enterprises owned by Minority (MBEs), Women (WBEs), Disabled Veteran (DVBEs), Lesbian/Gay/Bisexual/Transgender (LGBTBE), Persons with Disabilities (PDBE) and Small and (8a) firms; collectively known as Diverse Business Enterprises (DBEs).



Alvah Group Inc.





PG&E Undergrounding

Alvah Group has been contracted to provide electrical undergrounding services in the PG&E Undergrounding Program.

Currently we are assigned 51 projects that will underground 121 miles of electrical infrastructure throughout PG&E regions in California (Humboldt, Napa, Stockton, Placer, El Dorado, Peninsula and Sonoma).

During the PG&E Undergrounding efforts we are looking for minority/diversity support in the following areas:

- Trucking Services.
- Equipment Rentals.
- Material Procurement.
- Asphalt and Concrete Restoration.
- Engineering and Drafting Services.
- Utility Locating Services (GPRS, Line & Locate, etc).



Alvah Group Inc.





Contact Information

The full Alvah Group Supplier Diversity Program is available online through our website linked below:
[Alvah Group Supplier Diversity Program](#)

In addition to our full Supplier Diversity Program our website provides Subcontractors an opportunity to share more about themselves and they can contact us through our Supplier Informational Form:
[Supplier Informational Form](#)

Thank you for the support in diversely building and maintaining our utility infrastructure!



Alvah Group Inc.



CHARGE

CHARGE



WHO WE ARE



Four Companies. One Vision:

To be the employer of choice providing the most trusted, sought-after, utility-based infrastructure services.

CHARGE



Accu-Bore
Directional

A CHARGE COMPANY



Veteran Power
Infrastructure

A CHARGE COMPANY



Veteran Pipeline
Construction

A CHARGE COMPANY



Extreme
Excavating

A CHARGE COMPANY

2021
Extreme Excavating acquired,
extending reach to entire US
Pacific Coast, Canada to Mexico

2019
Companies relaunched under new
parent brand, Charge, to better reflect
their collective strength and agility

Veteran Pipeline Construction
(VPC) is launched

2013
Veteran Power, Inc. launched to
focus on electric infrastructure

2006
Accu-Bore Directional Drilling
incorporated

470

People Employed

\$5K-\$60M

Small projects to major EPC (Engineer, Procure, Construct) programs

DVBE

Disabled Veterans Business Enterprise (California)

A, C36 and C10

Licensed Contractor





WHAT WE DO

Utility-Based Infrastructure Construction

Electric and gas distribution

- Electric distribution civil and line construction including undergrounding for fire hardening, vault installation/replacement, compliance, emergency, electric vehicle charging stations, pole replacement, overhead conductors/equipment
- Gas main replacements, service replacements, valve replacements, new capacity installations, private to utility conversions

Joint trench installations

- Gas, electric, telecom

In-house directional drilling

- Up to approx. 28" steel diameter

Construction support

- Project and program management, estimating, project controls, contract management, procurement, safety and quality, traffic control
- Approx. 570 fleet and equipment assets spread between our various locations, 80% of which are company-owned



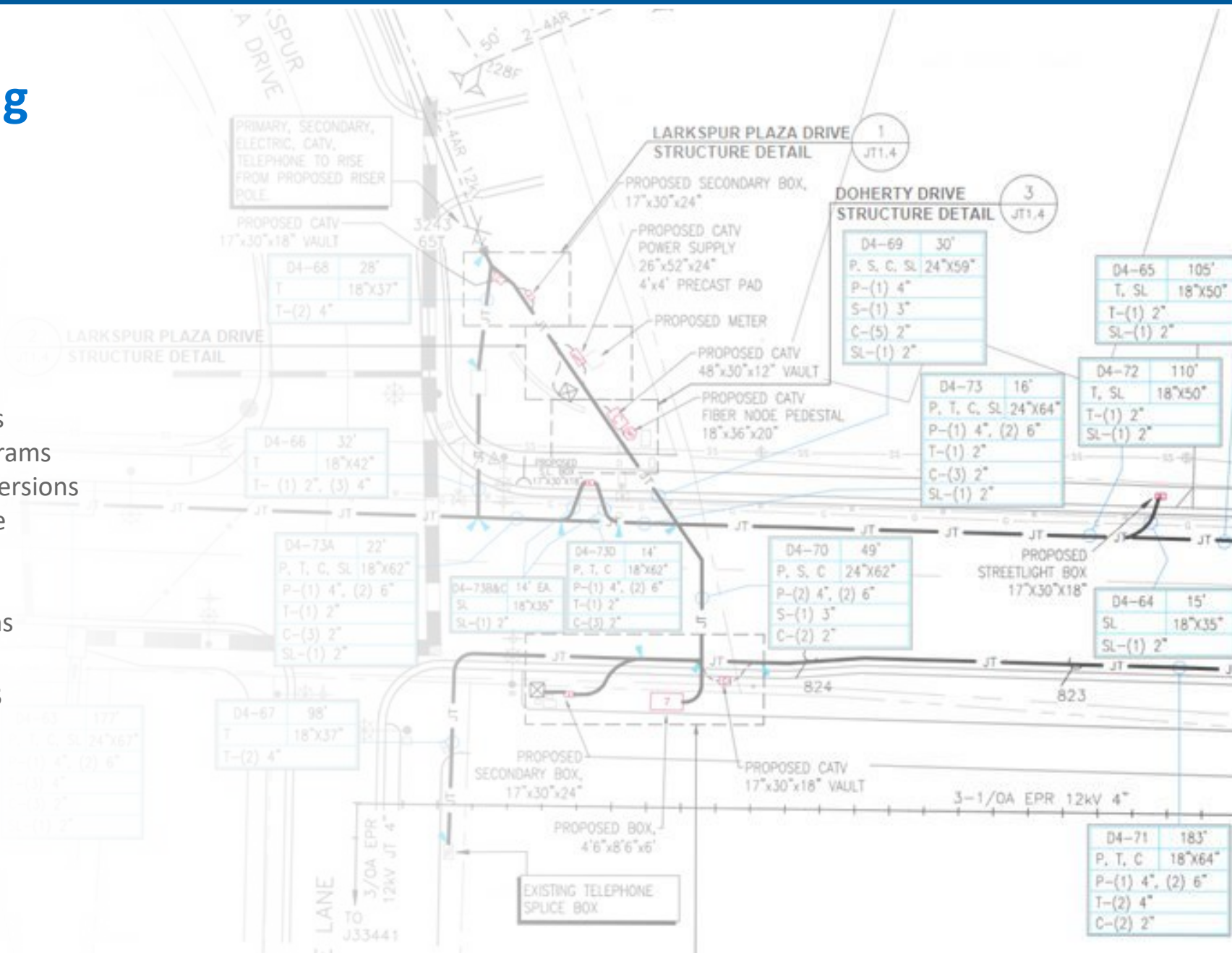
Electric/Gas Engineering

In-house designers, drafters and professional engineers

Specialize in joint trench, gas, and electric distribution design

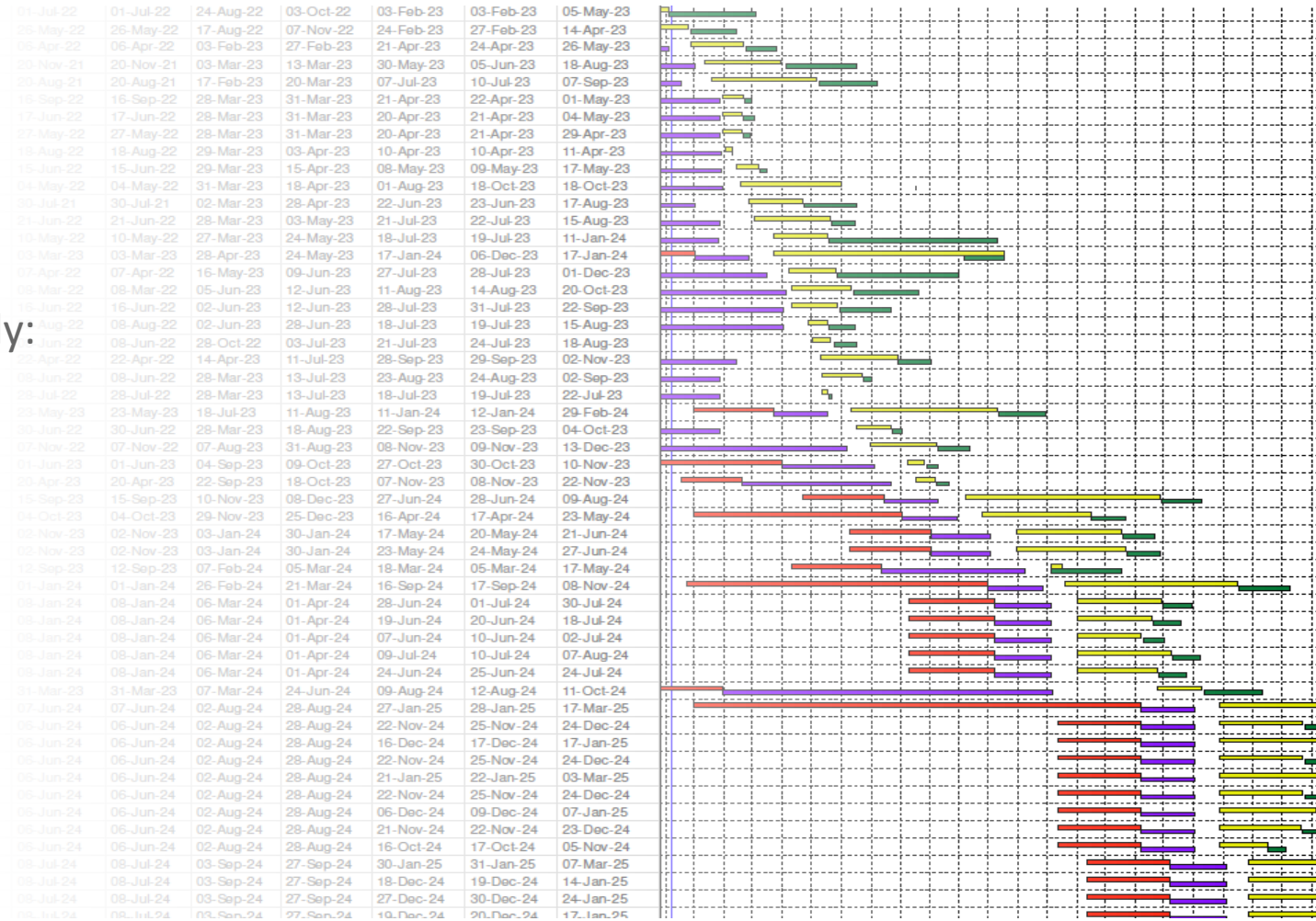
- Fast-paced, high-volume gas programs
- Fast-paced, high-volume electric programs
- EPC joint trench private to utility conversions
- Complex feasibility assessments, route planning, and design
- Directional drilling profiles
- Gas distribution replacement programs

Practical perspective from decades of construction experience



Scope of Work

- Awarded 39 circuit miles in 2022
 - Varying stages of readiness
 - 17 miles completed
- Two projects released for construction currently:
 - Middletown, Napa County
 - Morgan Territory near Mt. Diablo
- Upcoming projects:
 - Willow Creek
 - Middletown
 - Clear Lake
 - Sonoma



SUBCONTRACTING SERVICES



Typical services contracted

- Sawcutting
- Utility locating
- Traffic control
- Hardscape restoration
- Trucking of spoils

Typical goods purchased

- Electrical conduit and fittings
- Safety supplies
- Small power and hand tools
- Sand, base rock, slurry and hot mix

Rental equipment

- Shoring, plates and other mechanical equipment, such as trailers, trucks and excavators



How to work with us

1. Visit ChargeEPC.com and click on “Become a Supplier” in the footer or scan the QR code on the right
2. Complete a quick form to connect with our procurement team



WORK WITH US

BECOME A CHARGE SUPPLIER
If you believe that you would add value to Charge offerings, please use this form to tell us a little more about your business.

COMPANY NAME *

Company Name

DESCRIPTION OF YOUR BUSINESS, PRODUCTS OR SERVICES. WHAT DO YOU SUPPLY? *

Description of your business, products or services. What do you supply?

WHAT AREAS DO YOU CURRENTLY SERVE? *

Select One

ARE YOU A DIVERSE SUPPLIER? *

Select One

NEXT

THANK YOU!

Angus Coyle
COO
acoyle@chargeEPC.com
(925) 326-8332

Add Charge to your
contacts

