



the  
design  
collaborative

BuildOUT  
CALIFORNIA

CREATE,  
BUILD, &  
INSPIRE

# ABOUT US

Jamie Garza  
SE & CEO



Kristen Cole  
PE & COO



- We are an Architecture, Structural Engineering, Mechanical Engineering, Electrical Engineering, and Plumbing Engineering (ASMEP) design firm.
- 5 years in business going on 6!
- MicroSBE, MBE, WBE, and LGBTE
- Operate primarily in California, but have licenses in New York, and Arizona
- I started the business to follow my passion for integrated design, a holistic approach, and to create a platform for talented design professionals.



# THE CHALLENGES

## Fractured Delivery

- Clients are faced with a multitude of experts and consultants that they need to engage to accomplish each project.

## Schedule

- Clients have operational needs and requirements that the AEC industry repeatedly fail to meet.

## Budget

- Every client has a budget that our AEC industry often struggles to meet.



# OUR APPROACH

## Integrated

- We are the prime consultant or the prime team member that pulls all the necessary design experience and leadership needed to do your project.

## Collaborative

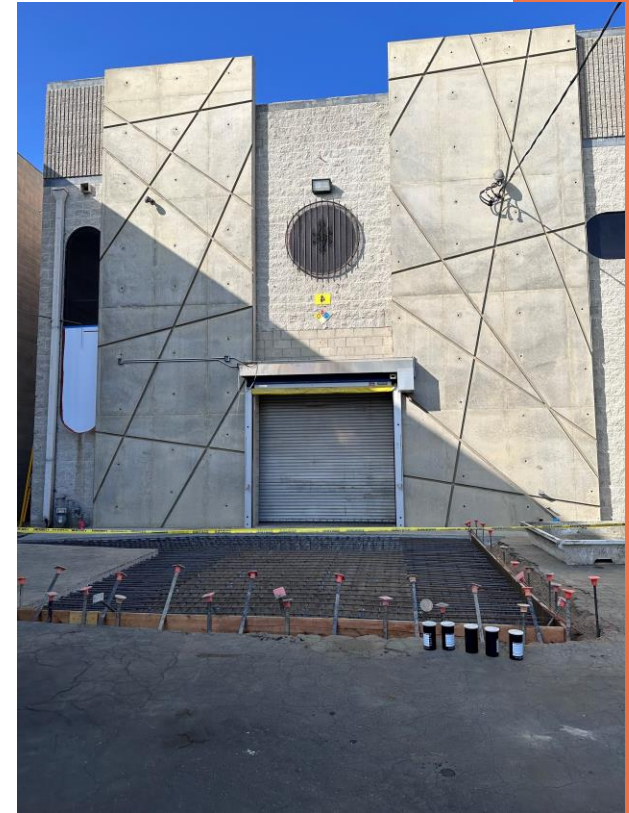
- We know that we need to work with the client, contractor, and internally with our design team to ensure we are providing the client with project solutions on time.

## Holistic

- Our integrated and collaborative approach ensures that all parties are working to meet the client's budgetary goals.

# PROJECT: Los Angeles Regional Food Bank

- Seismic Upgrade to an Essential Facility, HVAC Replacement, and Office Tenant Improvements
- Original needs were not defined on the project by the construction manager.
- TDC offered and provided the necessary services to complete the project on their accelerated schedule.
- Resulting in a successful project that is meeting the food banks goals without a gap in services needed.



# PROJECT: Go Get 'Em Tiger

- Architectural, structural, and mechanical services, with an Electrical and Plumbing sub-consultant for the renovation of this store.
- Santa Monica building department approval posed the greatest challenge.
- Persistence and working with the different plan checkers to develop a solution for this renovation in an existing building.
- Approved renovation ready for construction in early 2024.



# PROJECT: Golden Bough Playhouse by Pacific Reparatory Theatre, Carmel-By-The-Sea

- Architectural and Structural Engineering Services, plus Prime Services engaging as the full AOR for the Pac Rep for sub-consultants and contractor interaction.
- Full interior renovation of the theatre, including new stadium seating, new basement, expanded lobby and restrooms, and interiors.
- Took over the project from an architect that could not get a permit for over a year.
- Project is permitted and moving along in construction!





# OUR CLIENTS

- Los Angeles Regional Food Bank
- Los Angeles County Museum of Art
- Go Get 'Em Tiger
- Pacific Repertory Theatre
- Gonzalez Architects - Hotel del Coronado
- Cuningham Group – Holy Family School
- SmithGroup – California High Speed Rail
- JBT Aerotech
- Affiliated Engineers – Caltech & CHOC
- AlfaTech – So Cal Gas
- Nancy Rubins, Artist
- Sterling Ruby, Artist
- Whittier Museum





# the design collaborative

Jamie Garza  
SE & CEO  
213 663 2017  
jaime@designcollaborate.com



Kristen Cole  
PE & COO  
310 462 5278  
kristen@designcollaborate.com



1745 E 7th St Los Angeles, CA 90021 | [www.designcollaborate.com](http://www.designcollaborate.com)

CREATE,  
BUILD, &  
INSPIRE



# WE WANT TO WORK WITH YOU!

- Grow to serve Utilities, City's, Airports, Colleges, Universities, and continued growth in our non-profit/commercial work.
- A unique approach in the current market, holistic and integrated, by providing a platform for the client's vision and dreams!
- Our clients see us as a firm capable of fulfilling all their design needs.

**the**  
**design**  
**collaborative**