

GETTING TO KNOW SWINERTON



COMPANY HISTORY

1888-1900

Boyd, Sharples & Lindgren

1900-1908

Lindgren Hicks

1908-1923

The Lindgren Company

1923-1942

Lindgren & Swinerton

1942-2001

Swinerton & Walberg

2001



SWINERTON

1994

SWINERTON
MANAGEMENT & CONSULTING



2008-2021

SWINERTON
RENEWABLE ENERGY



2014-2021



2021

WALKER x SWINERTON
Perq

TIMBERLAB

SAKBuilders

MDBUILDERS

* Perq is a Swinerton x Walker innovation – a parking structure product.

** Timberlab is an affiliate supplier of Swinerton.

*** SAK Builders is an affiliate subcontractor of Swinerton.

**** Acquired by American Securities and rebranded SOLV Energy.

GEOGRAPHIC REACH



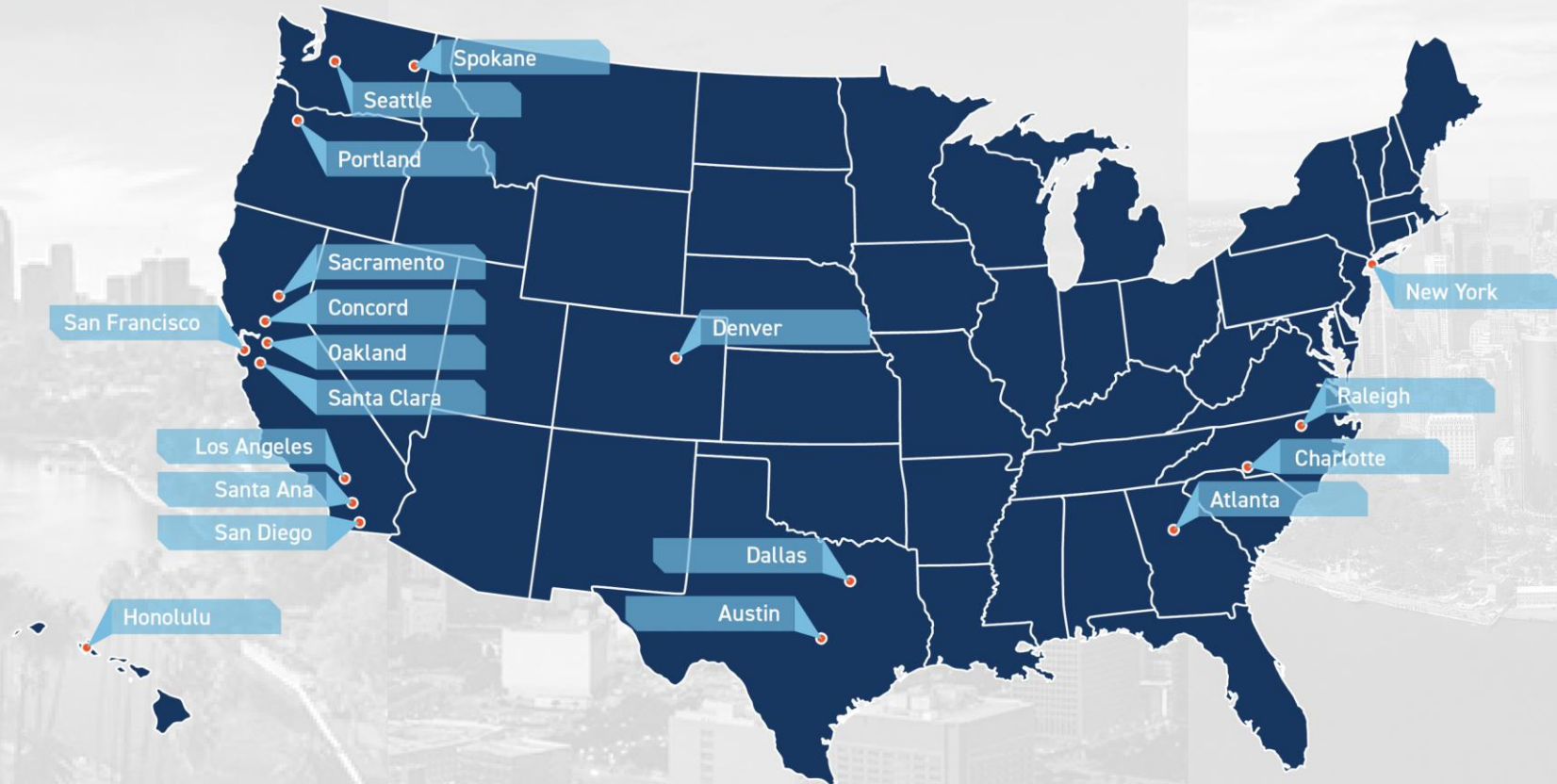
100%
Employee Ownership



19
Office Locations



4,000+
Experts Strong



MARKETS WE SERVE



CORPORATE CLIENTS

AVIATION/CARRIERS

Alaska Airlines
American Airlines
Delta Air Lines
Southwest Airlines
United Airlines

CONSULTING, BUSINESS SOLUTIONS & LEGAL

Deloitte
Moss Adams
SAP
Thompson Reuters
Workday

CORPORATE CAMPUS

Chevron
Microsoft
Paypal
Salesforce
Samsung

ENERGY

Chevron
Duke Energy
Pacific Gas & Electric
Sempra Energy
SoCal Edison

FINANCIAL SERVICES

Capitol One
Citicorp
City National Bank
Fidelity
First Tech Credit
JPMorgan Chase
Paypal
Schwab
UBS
USAA
Visa
Wells Fargo

INDUSTRIAL

CBRE/Trammel Crow
Dominos
Fed-Ex
JDA
Verizon

INSURANCE & SURETIES

Allianz
Gallagher
State Fund
United Healthcare
Zurich/Farmers

LIFE SCIENCES

Alexandria Real Estate
BioMed
Genentech
Healthpeak
Samumed

MULTI-SITE ROLLOUT PROGRAMS

American Airlines
Merrill Lynch
Red Lion Hotels
Umpqua Bank
Union Bank

RETAIL

Bright Horizons
Columbia Sportswear
Live Nation
Nike
Tiffany & Co

TECHNOLOGY

Adobe
Facebook
Google
Keysight
LinkedIn
Microsoft
Salesforce



** This is only a partial list of our Corporate Account Clients.*

KEY PROJECTS





SWINERTON RECOGNIZES THE IMPORTANCE OF LOCAL, SMALL, MINORITY, WOMEN, VETERAN, LGBTQ+ AND DISABLED BUSINESS ENTERPRISES AND WORKFORCE, TO THE ECONOMICS OF THE CONSTRUCTION INDUSTRY, THE COMMUNITIES THEY SERVE, AND TO OUR OWN SUCCESS AS A BUILDER.

Swinerton is proud to establish a higher standard of excellence for the construction industry with our outreach programs. This is not just an effort that we provide for clients that request this consideration; this is a part of Swinerton's culture and our commitment to the communities that we serve.

DOING BUSINESS WITH SWINERTON

WHAT'S REQUIRED



FINANCIAL

Income Statement plus
Balance Sheet - full 12 months



BONDING

(As Applicable)
Letter of Bondability,
not the actual bond



INSURANCE

Certificate of Insurance



SAFETY

(As Applicable)
OSHA Forms 300 & 300A,
3-year EMR History



CERTIFICATIONS

(As Applicable)
SBE, MBE, WBE, DVBE, LGBTBE,
etc.



LINE OF CREDIT LETTER

(As Applicable)
Bank/Financial Institution



FORM W-9

To become prequalified with Swinerton go to: <https://swinerton.com/subcontractor-prequalification/>

To renew your company's prequalification or you have questions contact: subcontractorprequal@swinerton.com



PREP FOR SUCCESS – SMALL BUSINESS TECHNICAL ASSISTANCE PROGRAM

Prep for Success is a program taught by Swinerton subject-matter experts with the goal of helping subcontractors successfully pursue and execute work with Swinerton. Prep for Success is Swinerton-centric, and it does not cover general business skills. Our program teaches best practices for working with Swinerton from prequalification to job close-out.

If your business is interested in participating contact SoCal Kim Patton kpatton@swinerton.com or NorCal Mick Penn mpenn@swinerton.com



MBE/WBE/DBE/DVB/SB Subcontracting &
Supplier Goal Across all Divisions

CORPORATE COMMITMENT

Swinerton is strongly committed to promoting and increasing participation of local, small, minority, women, veteran, LGBTQ+ and disabled business enterprises in all our purchasing and contract business. Our goal to award at least 20% of subcontracting and supplier volume to these valued partners is proudly maintained across all divisions.

Learn more about the Swinerton's Corporate Commitment at: <https://swinerton.com/blog/swinerton-reaffirms-its-commitment-to-diversity-during-small-business-week/>

Learn more about Swinerton Community Outreach at: <https://swinerton.com/about-us/community-outreach/>

UPCOMING REGIONAL PROJECT PURSUITS

WEST VALLEY COLLEGE - LEARNING RESOURCE CENTER

PROJECT LOCATION

Bay Area Building

BID DUE DATE

9/14/2022

PUBLISHED DATE

8/1/2022

[BID ON THIS OPPORTUNITY](#)

LIGHTFIGHTER VILLAGE

PROJECT LOCATION

Bay Area Building

BID DUE DATE

7/29/2022

PUBLISHED DATE

7/8/2022


[BID ON THIS OPPORTUNITY](#)

TERMINAL 1 PARKING PLAZA

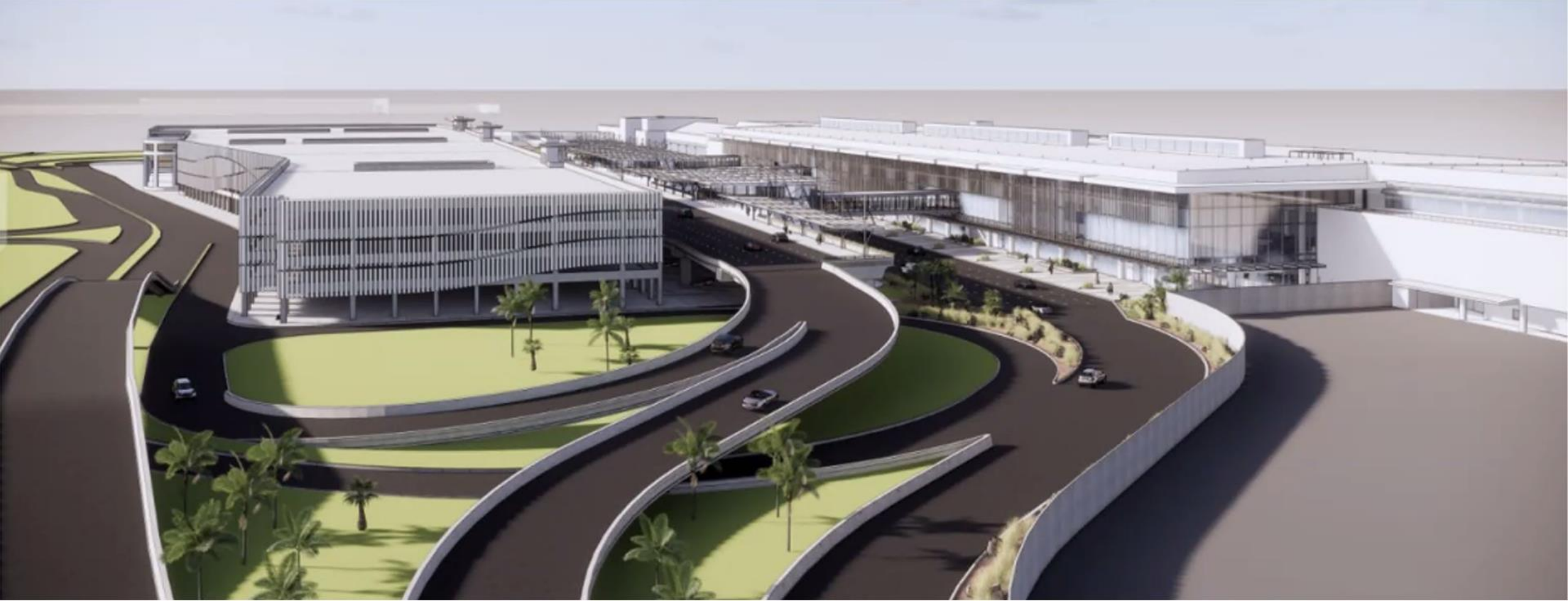
Cast-in-place, five-level structure, approximately 2,000,000 SF for 5,230 parking stalls. It will be constructed in two (2) stages. Stage 1 will be 12/23/2022 to 8/01/2024 and Stage 2 will be 12/29/2023 to 5/30/2025. Value = \$200M+



DECEMBER 2022 PROCUREMENT

An aerial architectural rendering of a large airport terminal and train station. The terminal is a long, multi-story building with a grey roof and white facade. Numerous aircraft are parked at gates along the top edge of the terminal. A train with red and white cars is visible on tracks that run parallel to the terminal. The surrounding area includes parking lots, roads, and other airport infrastructure. The text is overlaid on the right side of the image.

TRADES: Survey, Masonry, Structural Steel/Misc. Metals/Stairs, Waterproofing/Traffic Coating/Sealants & Caulking, Sheet Metal, Doors/Frames/Hardware, Terrazzo Flooring, Exterior Painting, Signage, Fire Protection Specialties, Site Concrete & Lithocrete Paving, Pavement Markings & Truncated Domes, Chain Link Fence, Landscape/Irrigation (within the Parking Plaza footprint)



CONTACT **US**

PROCUREMENT: Tyler McGee – tyler.mcgee@swinerton.com

INCLUSIVITY: Kim Patton – kpatton@swinerton.com