

I-10 Emergency Response



**SECURITY
PAVING
COMPANY, INC.**



BuildOUT Golden Pitch

January 12, 2024



Ramon Hopkins
Caltrans



Brian Algren
Security Paving



Ben Walnum
Griffith Company



Agenda

Initial Damage Assessment

Site Cleanup

Structural Testing/Decisions

Emergency Opening

Repair Strategy

Initial Damage Assessment

Fire was first reported early Saturday, November 11th, around 12:30 a.m. underneath the freeway near East 14th and Alameda streets.

Interstate 10 was closed in both directions. Approximately 450' section heavily damaged.

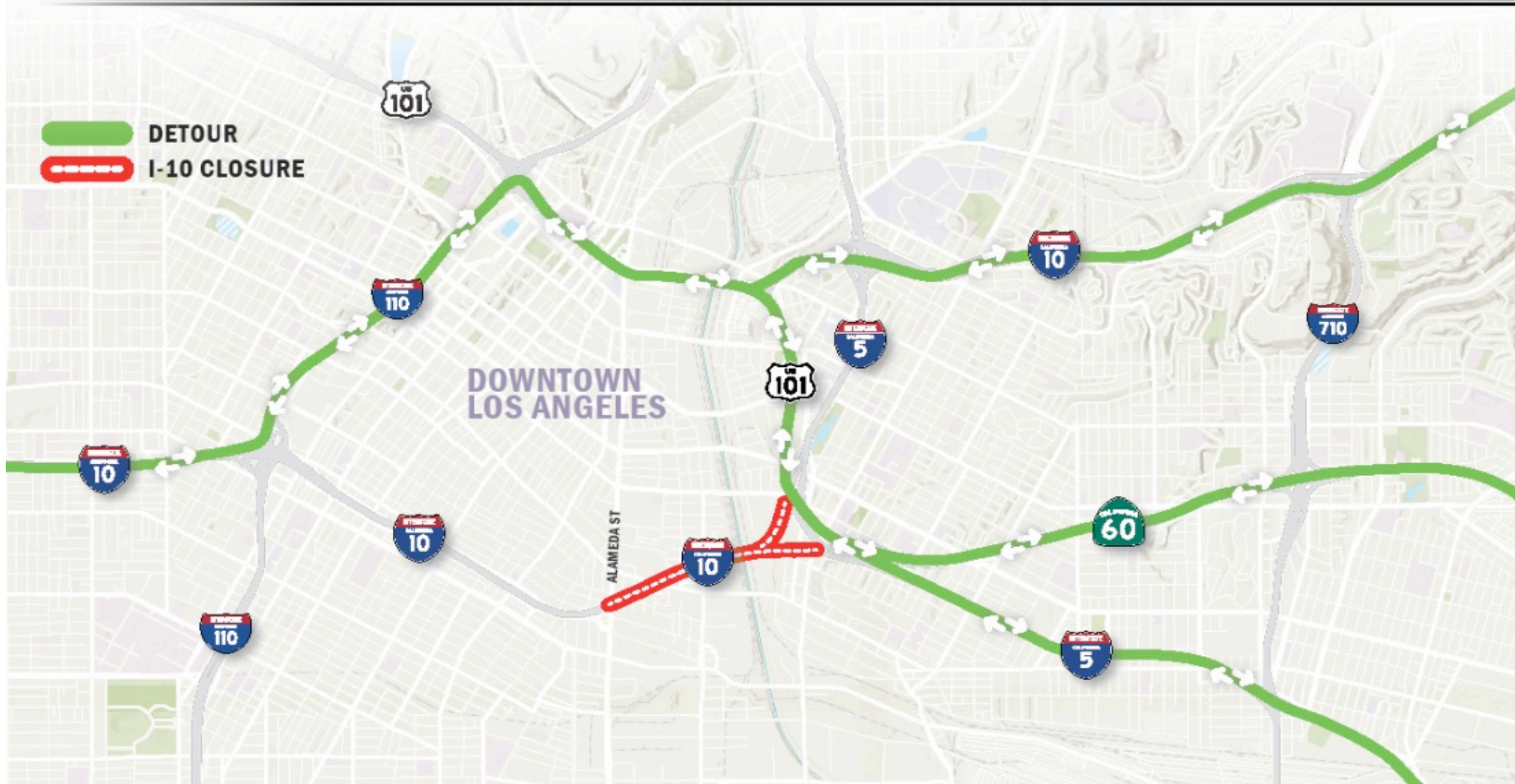
An estimated 300,000 commuters use this freeway daily.

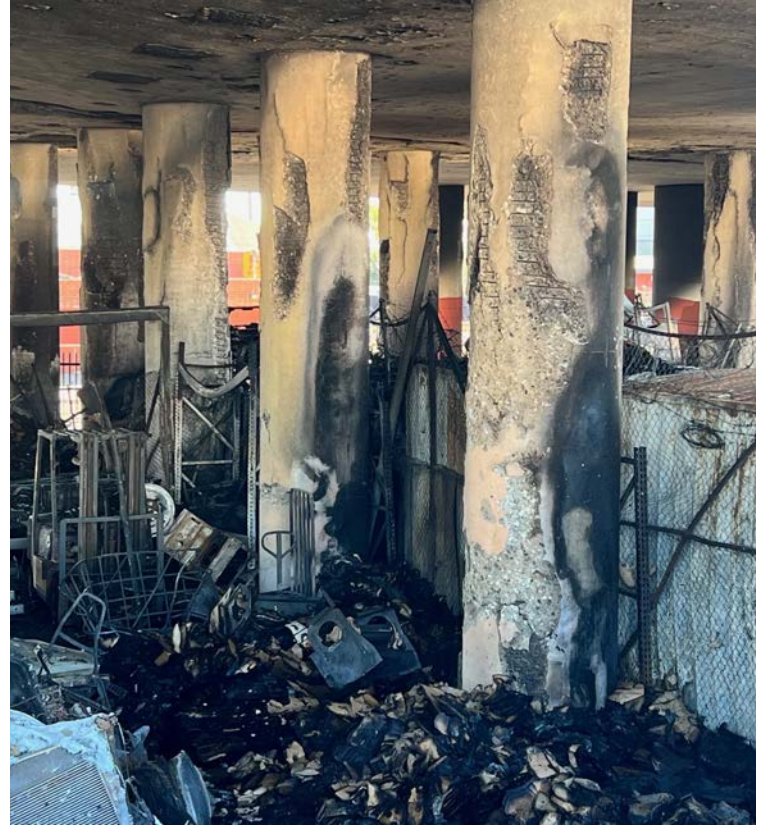
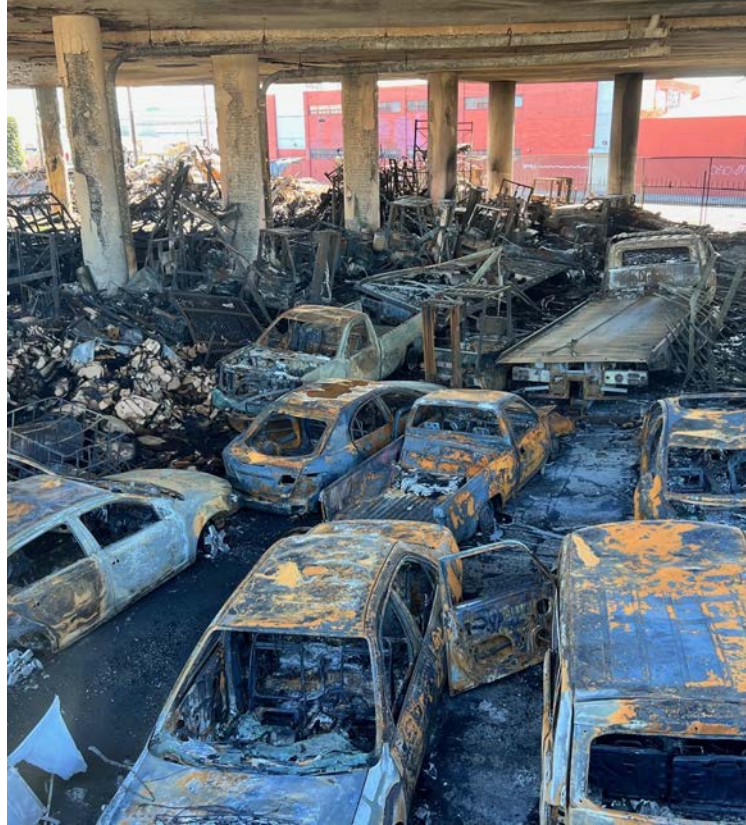




WESTBOUND & EASTBOUND DETOUR ROUTES

CLOSURE BETWEEN ALAMEDA ST. & EAST LA CONNECTOR





Initial Site Assessment



Initial Site Assessment



This thing is going to have to come down.

FHWA Administrator Shailen Bhatt



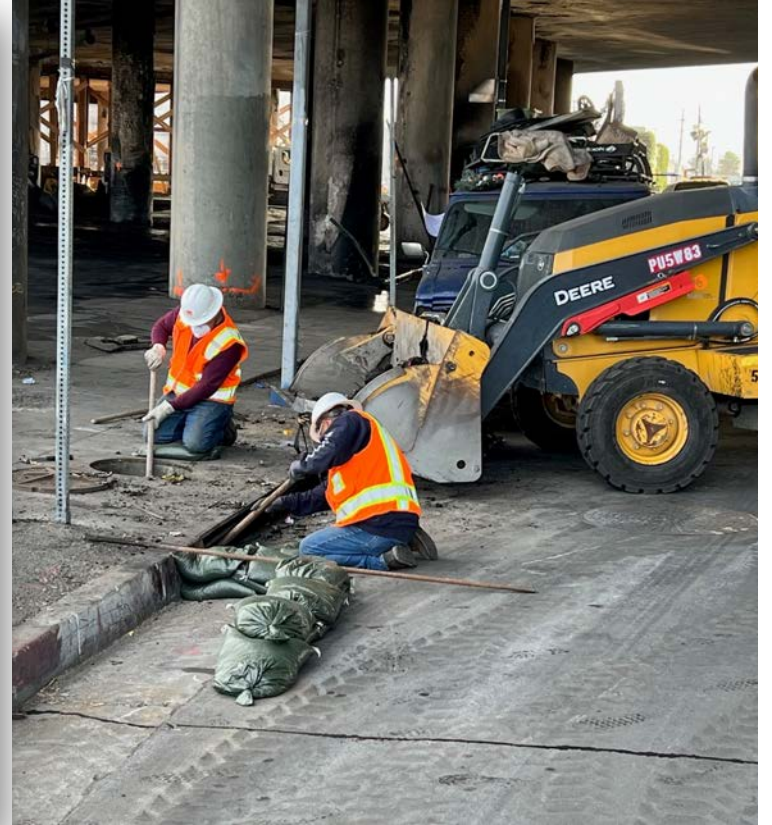
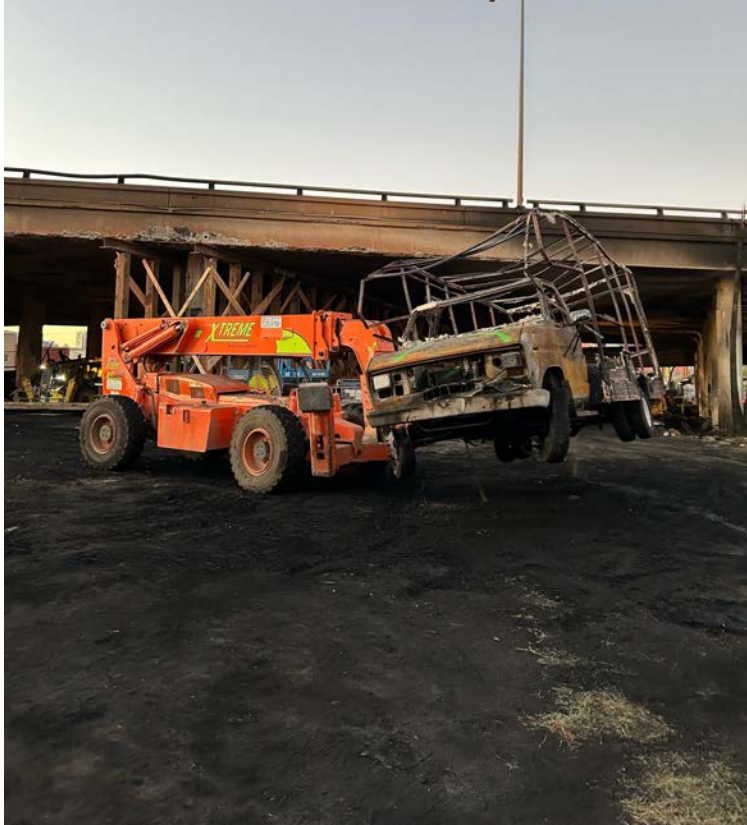
Site Cleanup

The site cleanup began immediately – 154 truckloads were removed within the first 48 hours.

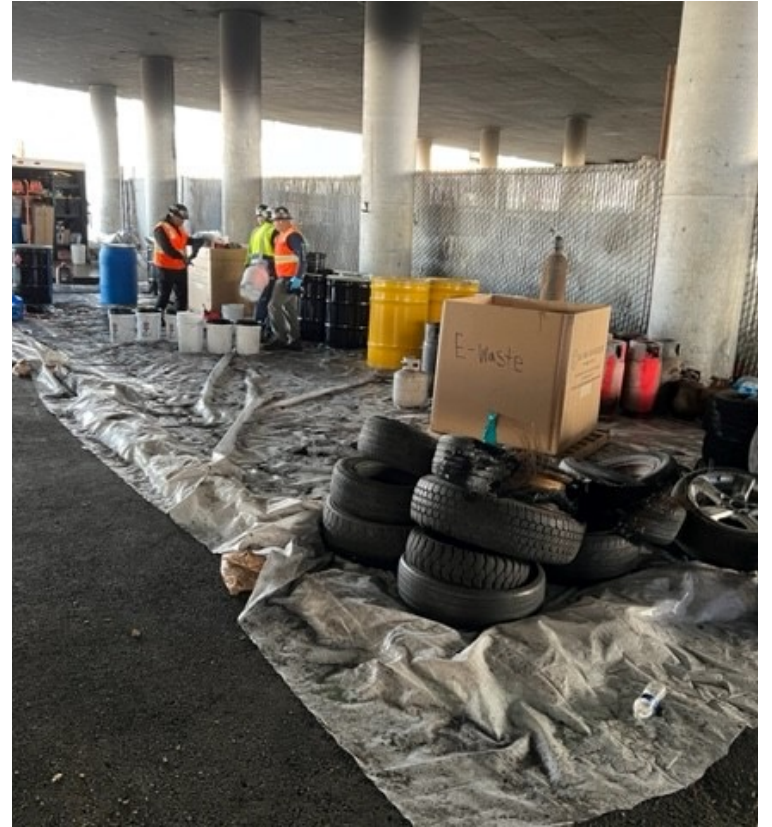
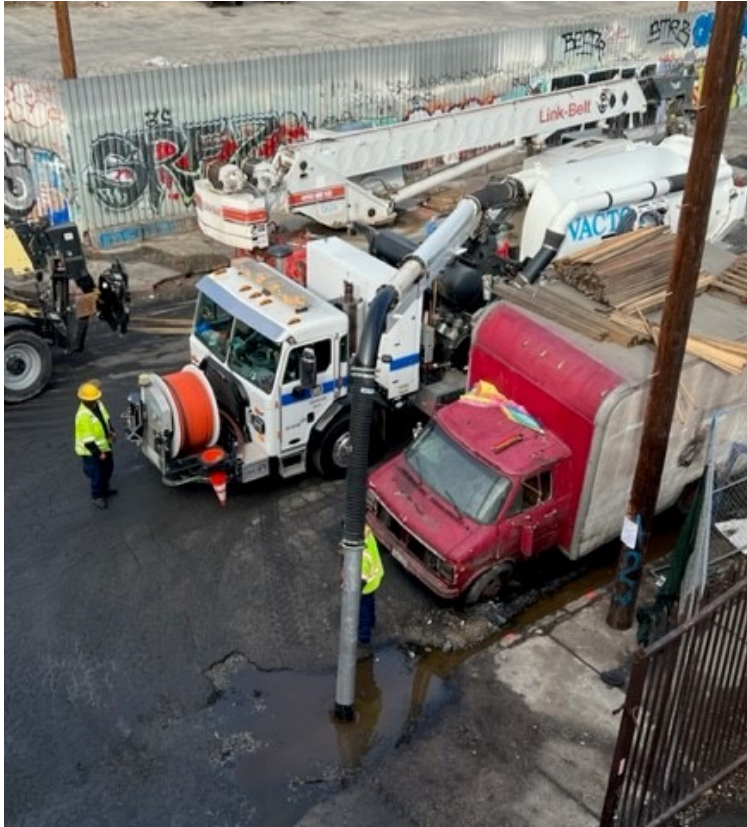
Over 1,000 tons of debris was removed.

Work had to be completed prior to structural inspection.





Site Cleanup



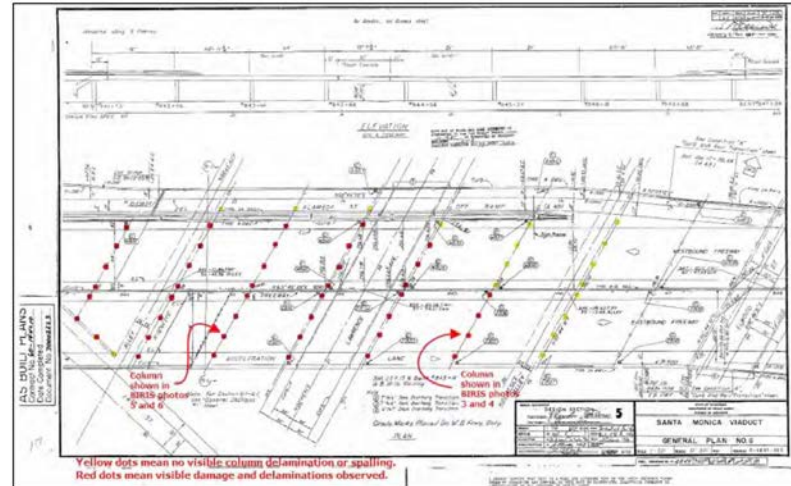
Site Cleanup

Structural Testing/Decisions

Structural engineers developed a testing plan to determine the soundness of the structure.

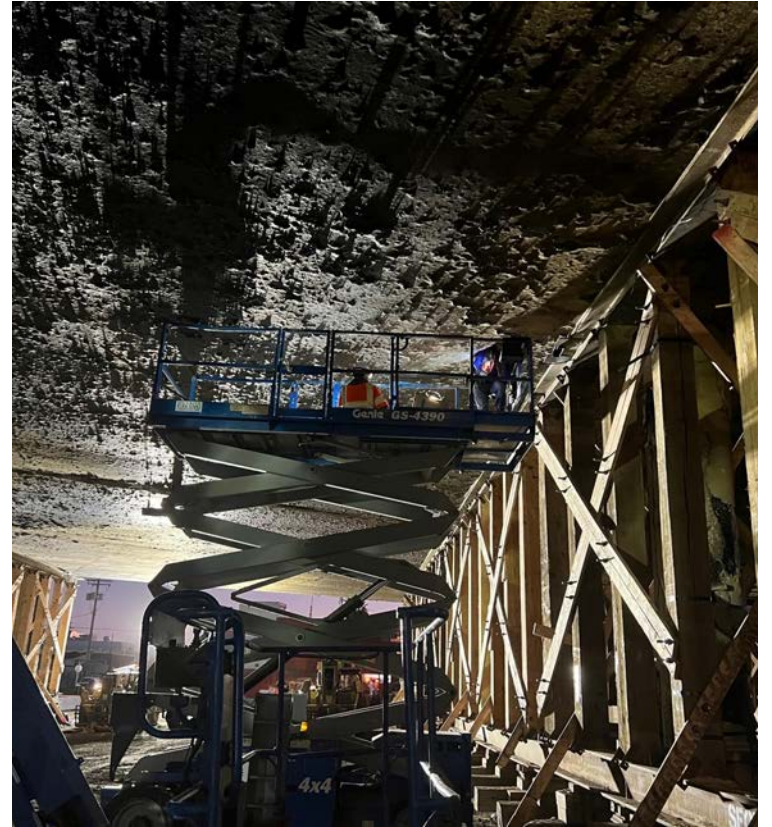
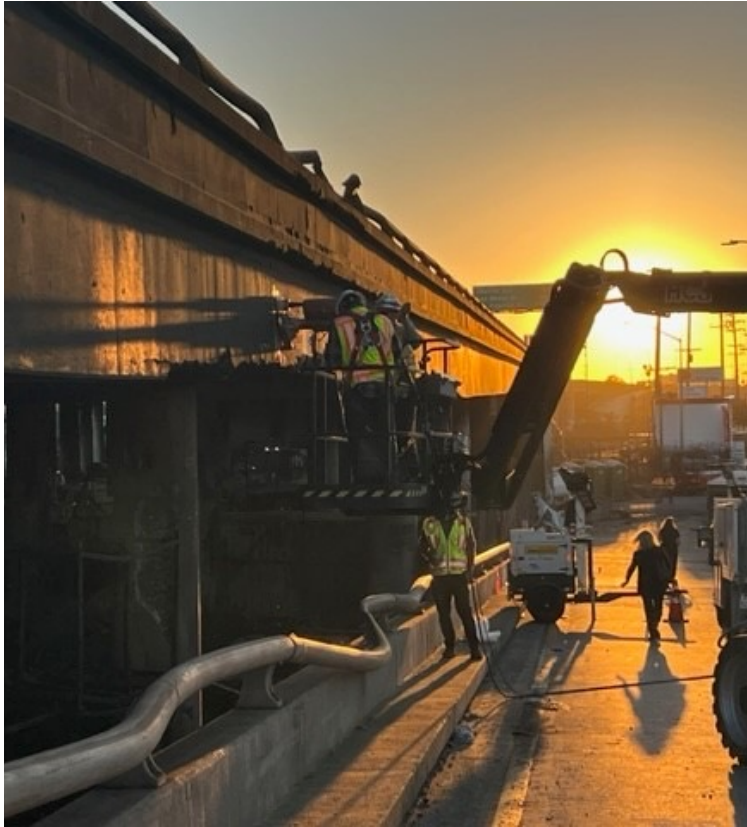
Samples of the deck, stem, and soffits were taken.

Concrete and Steel strength was tested.





Structural Testing/Decisions



Structural Testing/Decisions



Structural Testing/Decisions



California is leveraging an all-of-government approach — working 24 hours a day, 7 days a week — to fix the 10 as quickly as possible so we can get LA’s traffic moving safely in December

Governor Gavin Newsom



Emergency Opening

Mobilization of material for shoring the structure began the morning of November 12.

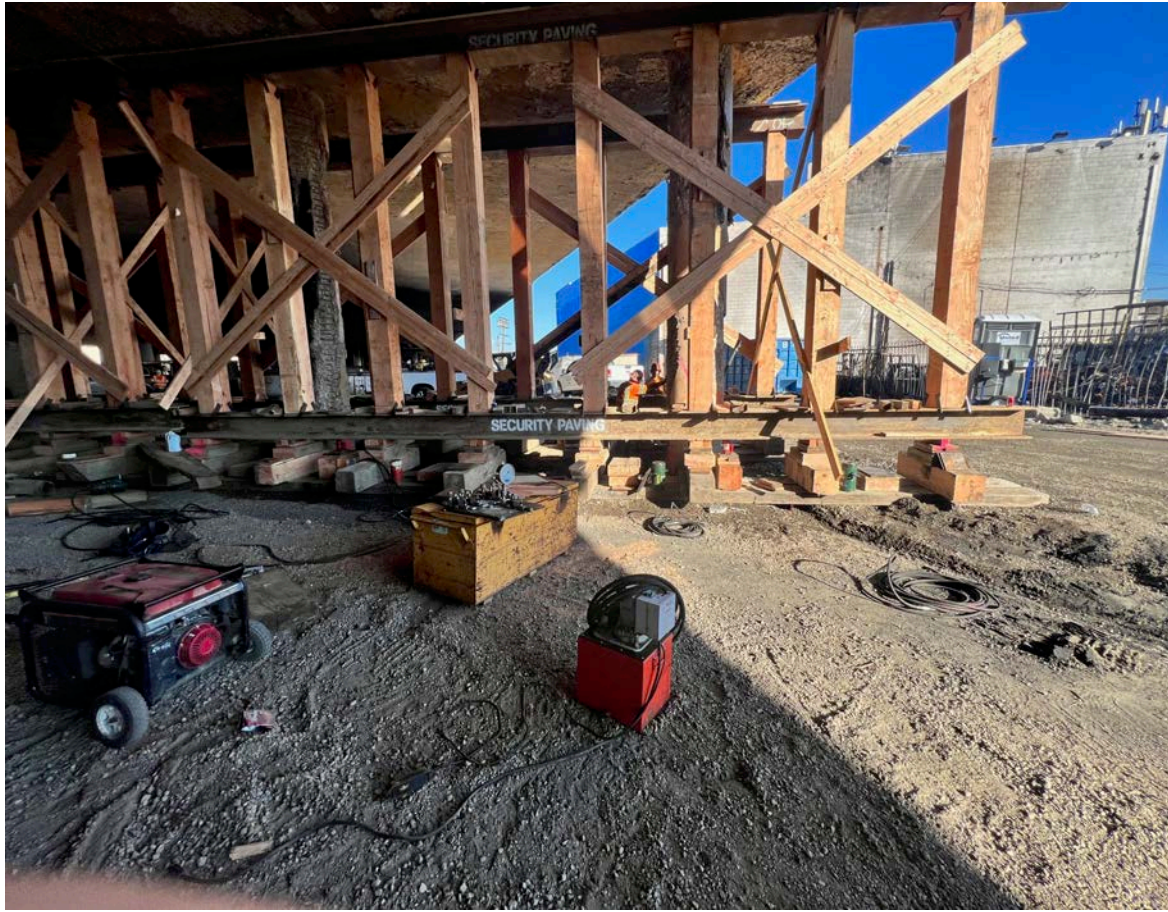
Falsework plan and calculations submitted within 10 hours.

Approximately 870,000 lbs of beams, posts, and steel used to erect 54 falsework bents.

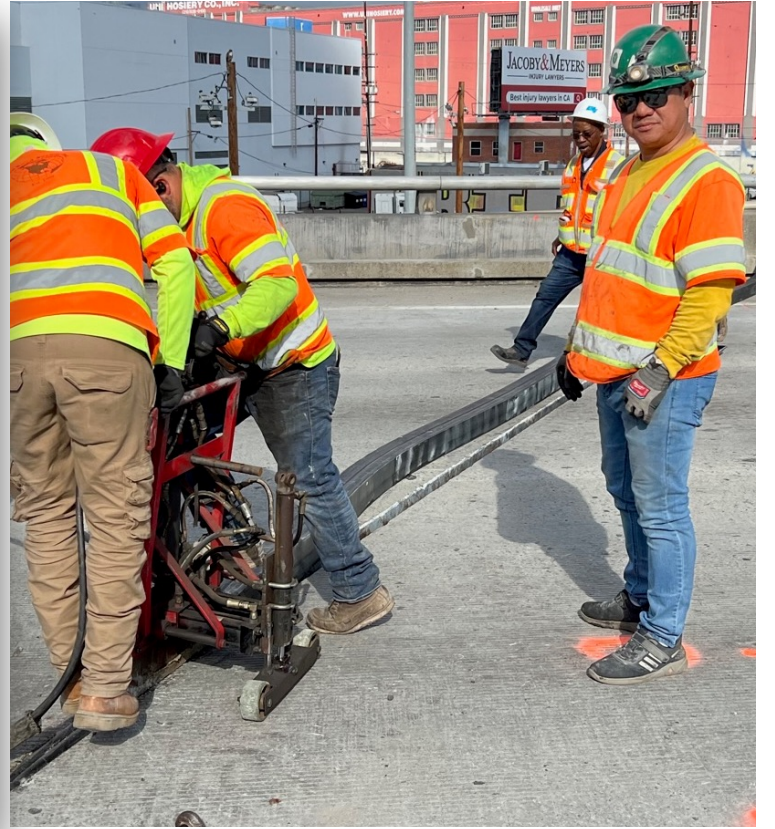
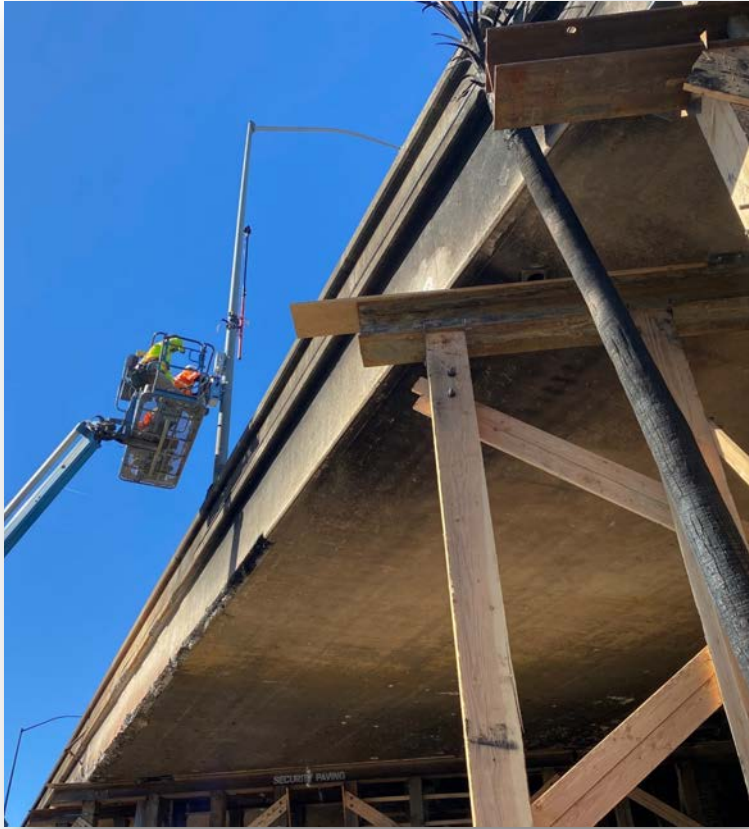




Emergency Opening



Emergency Opening



Emergency Opening



Emergency Opening



Emergency Opening



Emergency Opening



Emergency Opening



What began as months
has turned into days.
Thanks to the tireless
work of Caltrans and
union construction crews

Governor Gavin Newsom



Repair Strategy

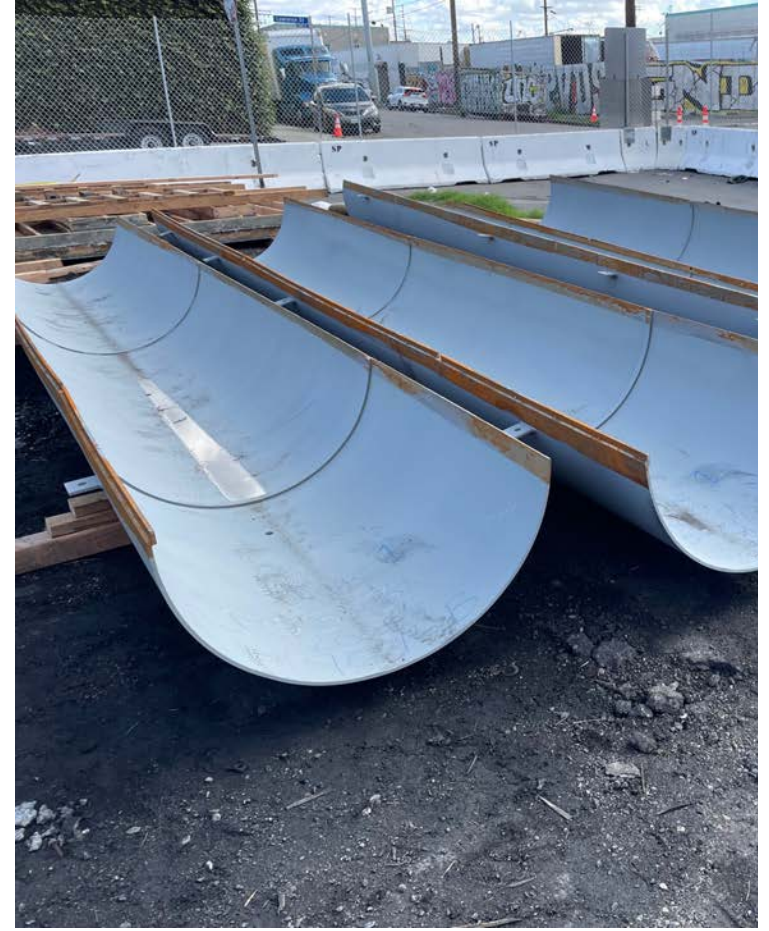
Most severe damage limited to eight columns.

Compromised concrete removed, replace rebar hoops as necessary, self consolidating concrete.

Installation of 65 steel case.

Replace unsound concrete on soffit.





Repair Strategy



Repair Strategy



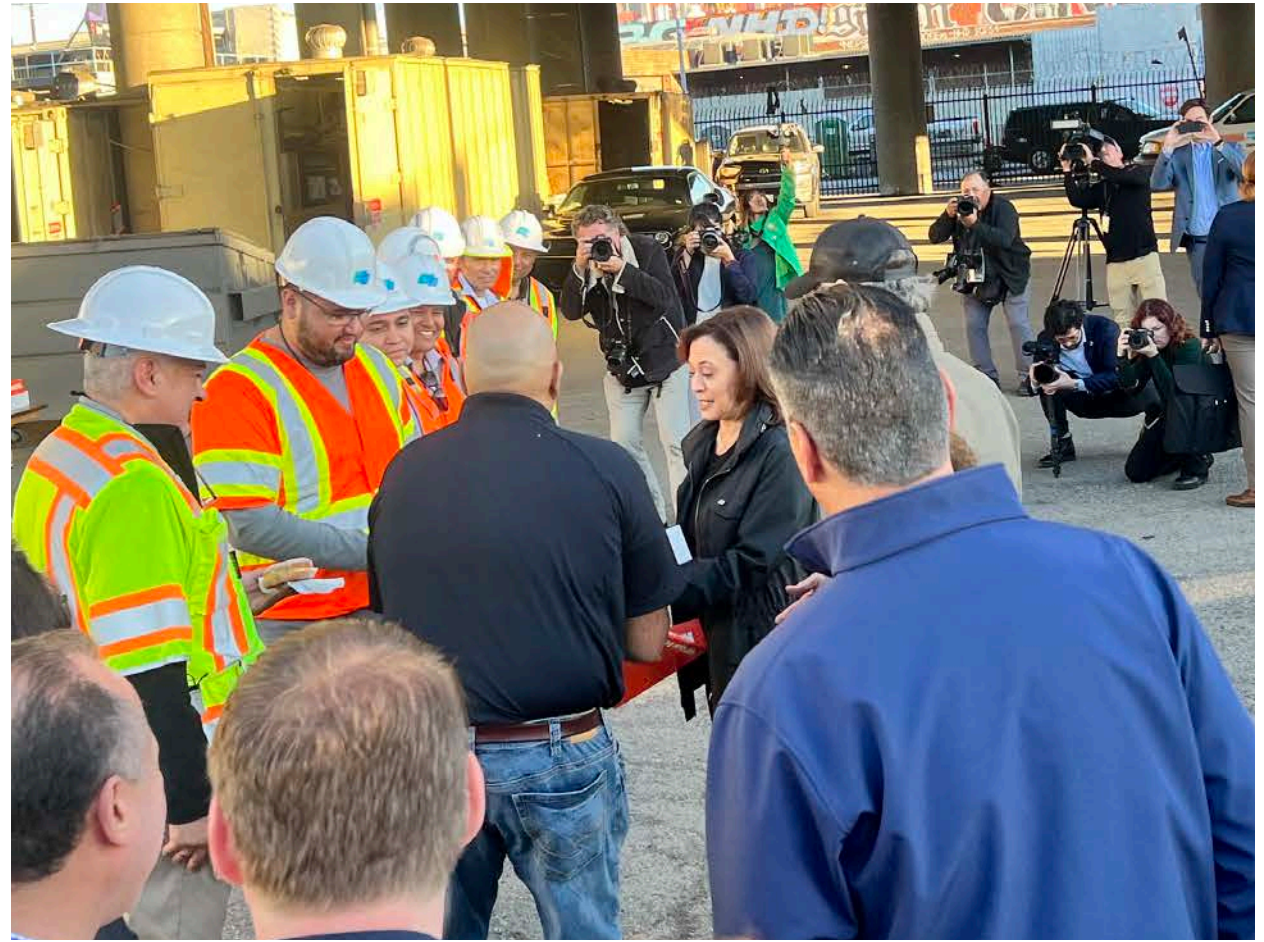
Repair Strategy



Public/Political Interest



Public/Political Interest



Public/Political Interest



The work that happened here is extraordinary.

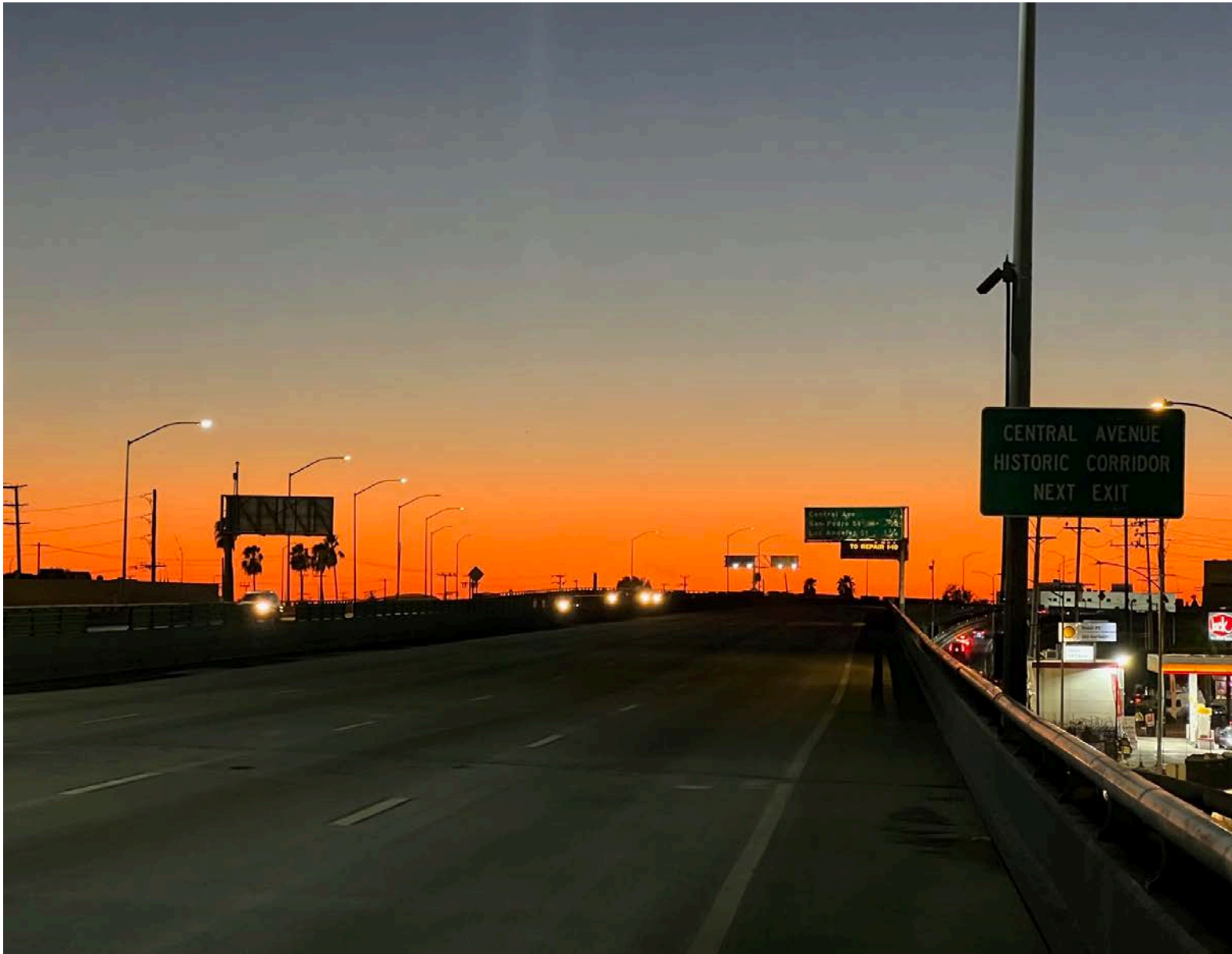
Vice President Kamala Harris











Thank you

Ramon Hopkins

Chief, Division of Construction

ramon.hopkins@dot.ca.gov

Website: dot.ca.gov