

BuildOUT

CALIFORNIA

**Adding Value,
Solving
Challenges**



***Water*earth™**



Adding Value and Solving Challenges

Stormwater / GI • Hydrology & Hydraulics • Water Resources • Civil Engineering • Environmental & CEQA • Biology • LEED • Permitting

DBE, SBE, WBE, LGBTBE

Since 2008

Offices

California • Nationwide

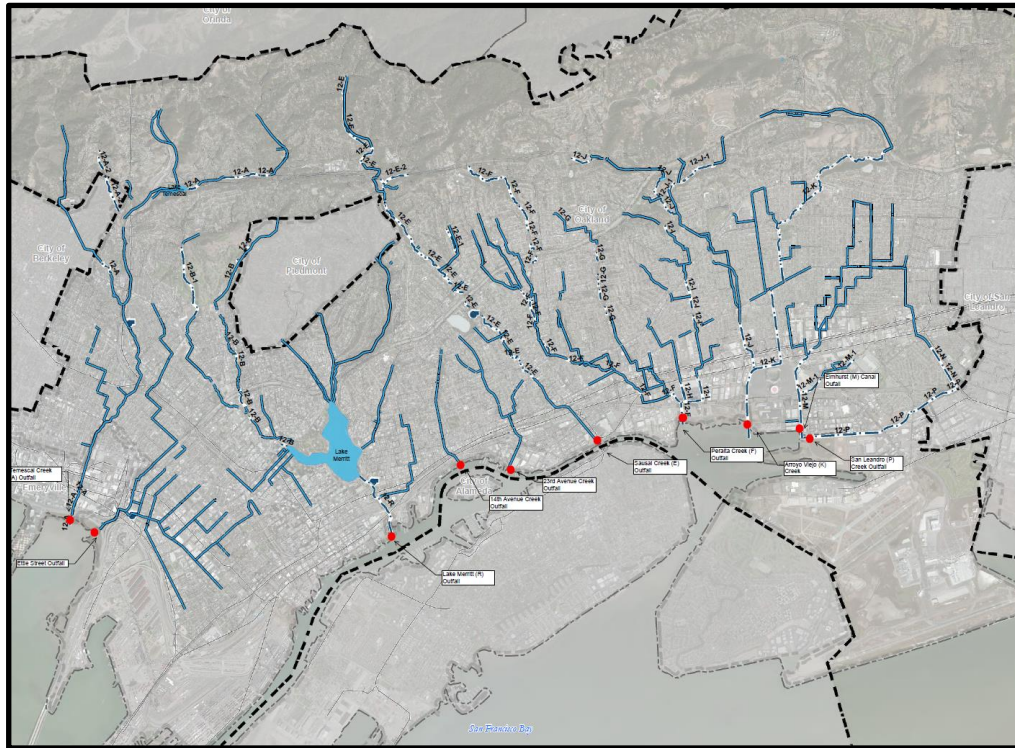
Principal

Jennifer J. Walker PE, DWRE, ENV SP, CFM, QSD
jwalker@watearth.com • 213.248.4554

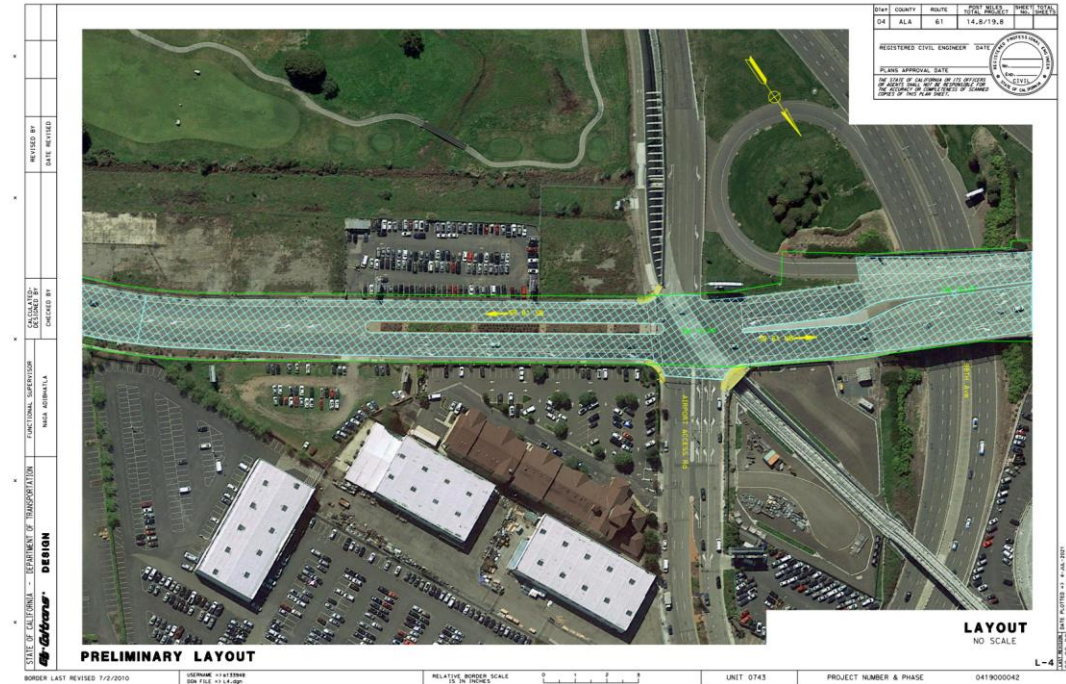
Communications

Adam (Susskind) Wolven • asusskind@watearth.com

Alameda County Zone 12 Drainage Master Plan



Caltrans D4 Drainage Improvements ALA61 Between Davis Street and Encinal Avenue





San Gabriel Valley Water QSD/P

- Stormwater Inspections
- Construction Support
- Permit Compliance

That is fast. Thanks for letting me know.

Liuzong Zhou
San Gabriel Valley Water
Company



California American Water Hydraulics

- Baldwin Hills
- Water Supply
- Hydraulics, Closed Conduit





Cal Poly W/WW Planning

- CEQA EIR
- Water Supply and Demands Analysis
- Long-term planning

Your team did a really good job. Would love to see the map of this process. Glad there are people who can do this kind of work.

**Eric Veium
Cal Poly San Luis Obispo**



Los Angeles County Metropolitan Transportation Authority Antelope Valley Line Capacity and Service Improvements Program
Exhibit 2 - Aerial Photograph



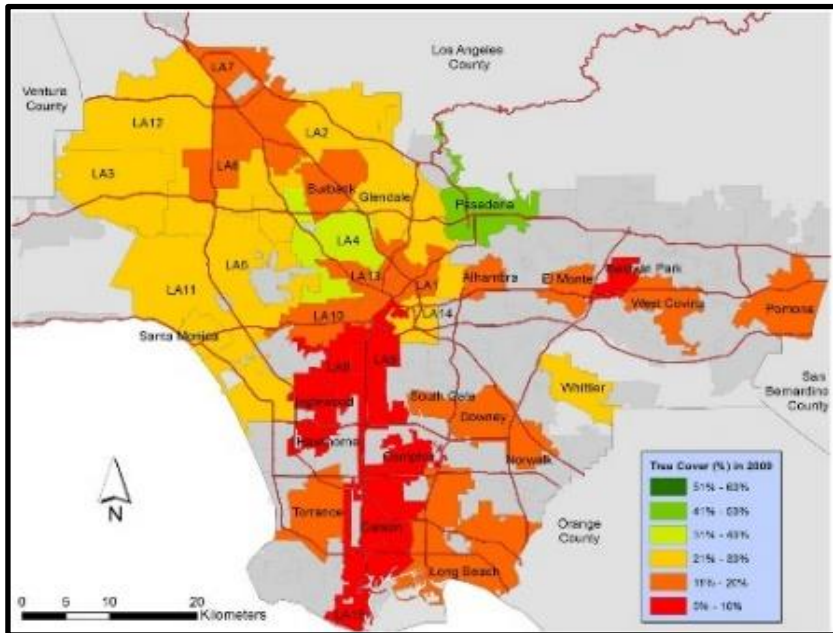
LA Metro Antelope Valley EIR

- Hydrology
- Water Quality
- Wetlands
- Tree Surveys
- Biological Studies
- CDFW Support



Modeling Proves No CEQA Mitigation Needed

Performed advanced modeling of tree canopy processes to prove no significant CEQA hydrologic or water quality impact for nearly 1,000-mile linear project



Expert Witness to Recoup Costs

Watearth helped western U.S. private client recoup over **\$1.5M** in flood control failure damages

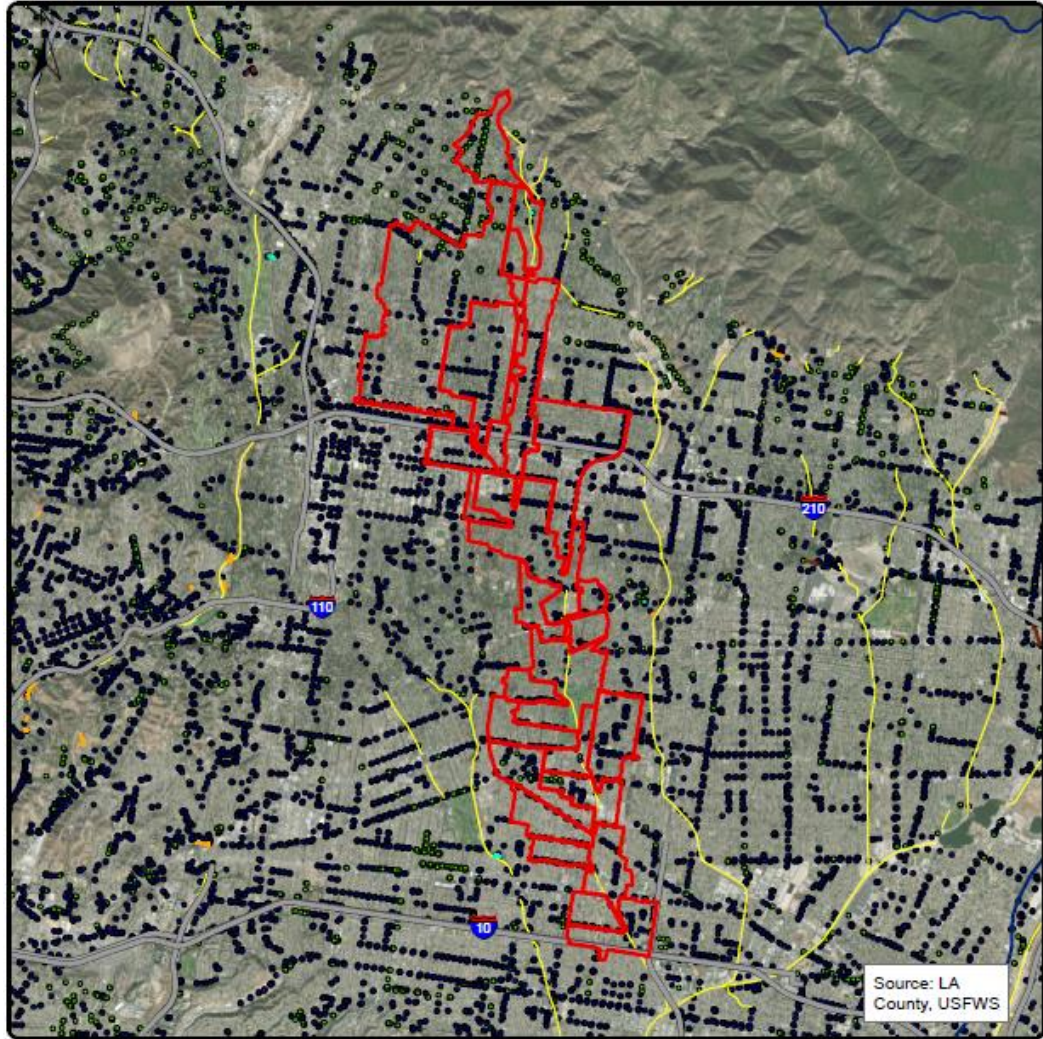
Metropolitan Water District



Skinner



Mathews

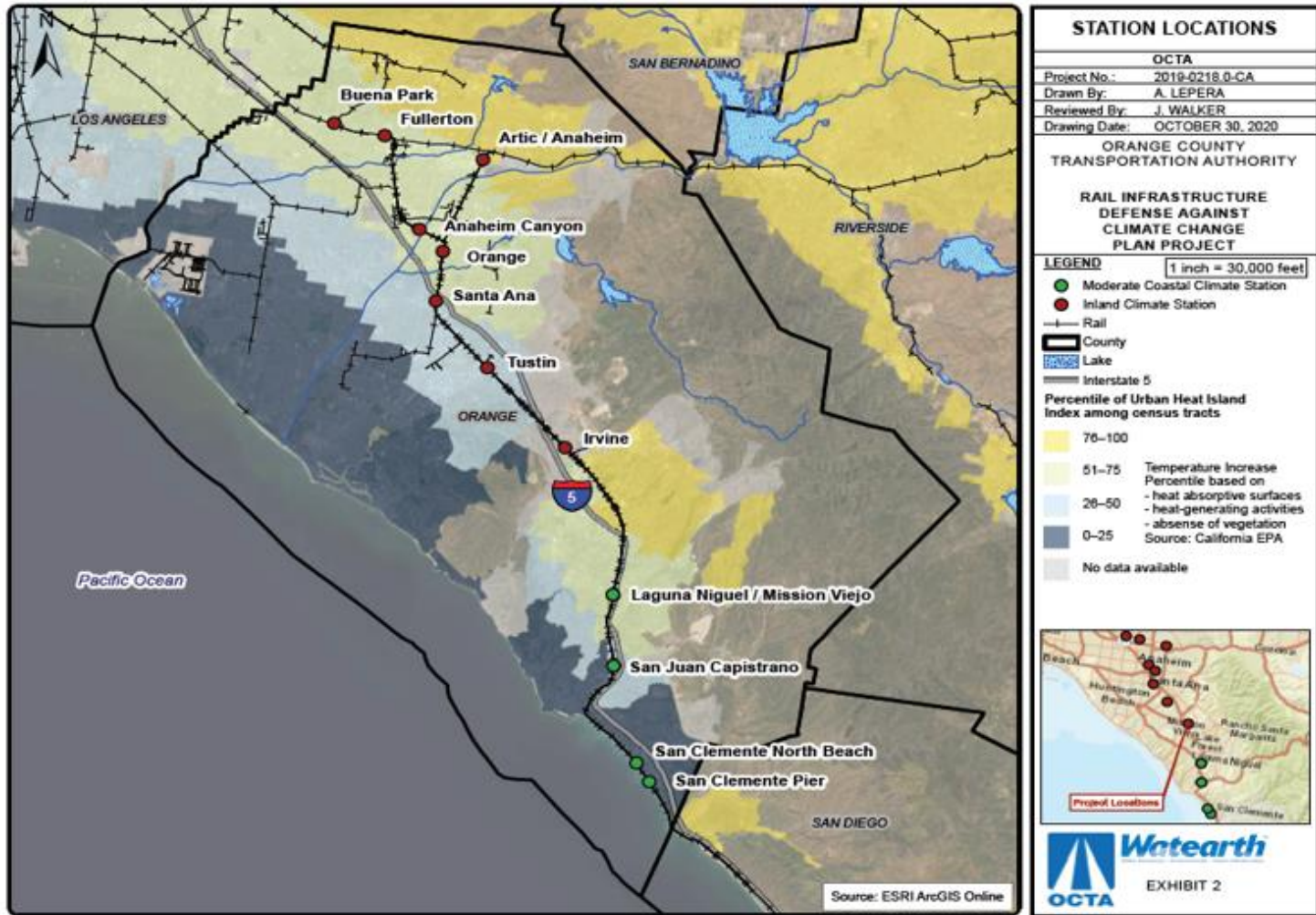


Rubio Wash and Morrison Creek 1/2D Modeling



We appreciate what you have produced so far.

Erik Chang and Enrique (Eric) Baul
Los Angeles County Public Works



OCTA Resiliency Planning

- Resiliency
- Regional rail planning
- Green infrastructure
- Climate change

Water Conservation - LA Metro

Bus/Rail Wash Consumption -50%
\$500,000 saved/year

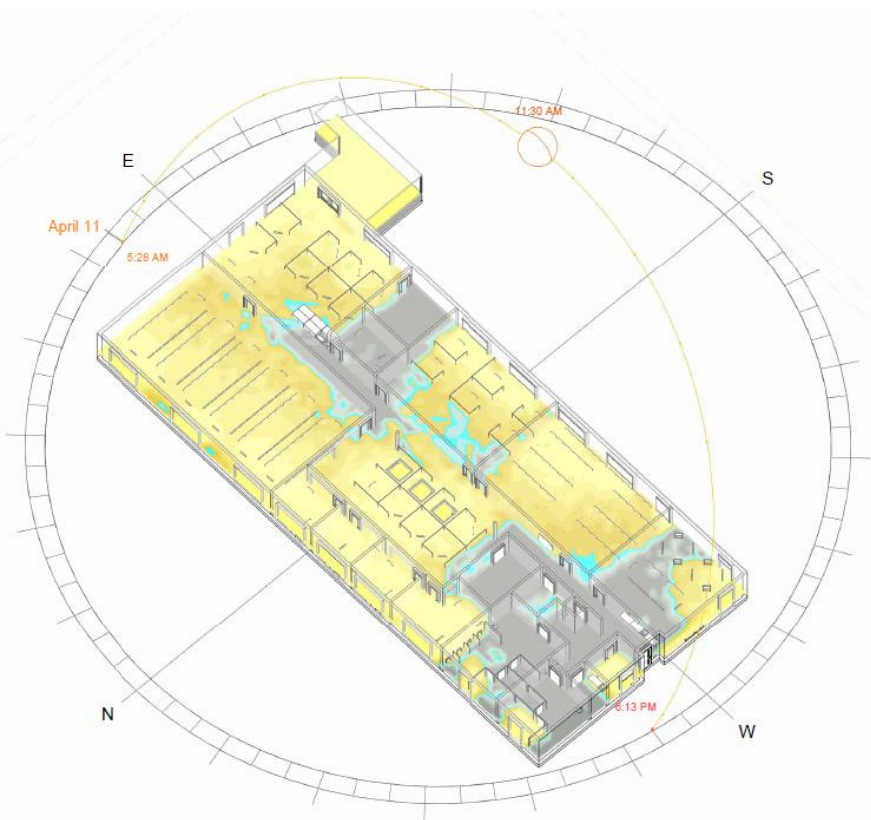
Irrigation Water -50%
\$325,000 saved/year

Indoor Plumbing Fixture Consumption -40%
\$50,000 saved/year



Utility Client LEED Consulting

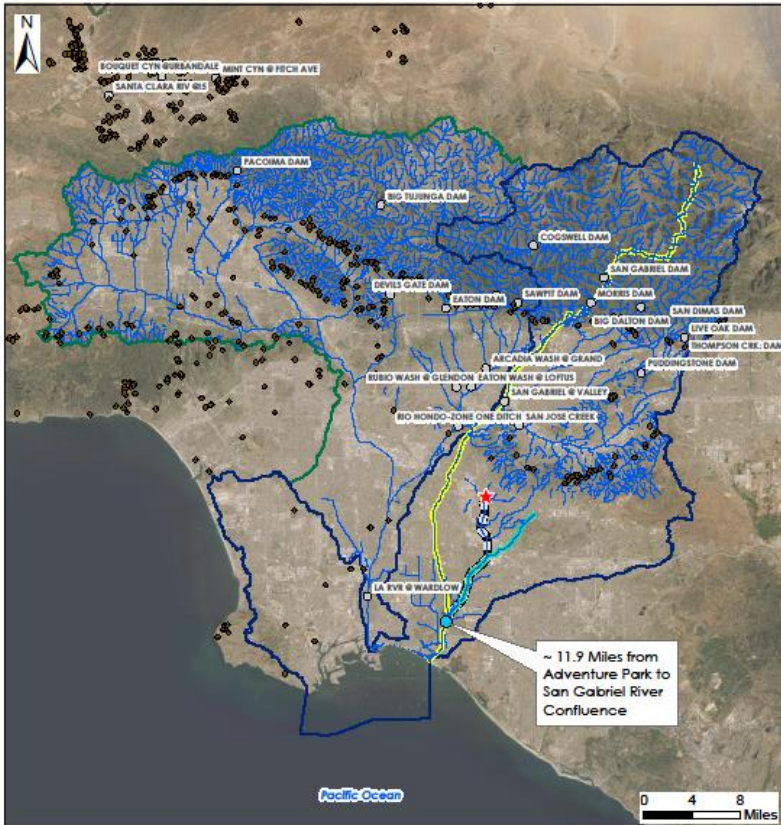
- LEED Consulting
- Integrative Process
- Multidisciplinary
- Offices and Vertical Integration
- Location & Transportation
- Sustainable Sites
- Water Efficiency
- Daylighting Modeling and Rainwater Management
- Materials & Resources Calculations



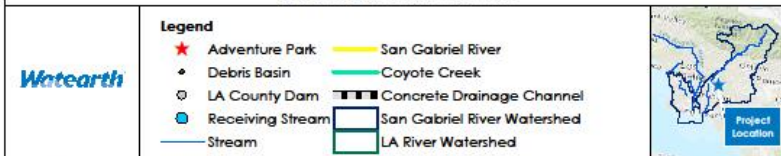


Crematory/Water Crematory

- Owner's Rep
- Planning and Zoning
- Civil Design
- Environmental Permitting
- City Permits
- Landscape
- Construction Management
- Value engineering saving \$800,000



Adventure Park Stormwater Capture
San Gabriel River Watershed Area



Adventure Park \$41M Design/Construction

- CEQA components
- Wet & Dry Weather & Water Recycling
- Final Design
- Geotechnical & Infiltration Testing
- Hydrogeology, Dewatering, Treatment
- LID, Hydrology, Water Quality Modeling
- Environmental Phase I/II, Monitoring
- Tree Protection
- Permitting
- Fish Passage
- Biological Services

In summary...

- We are a trusted advisor for owners. An advocate.
- We are a small, team-focused, mission-driven business, and we will welcome you into the team.

CEO

Jennifer J. Walker PE, DWRE, ENV SP,
CFM, QSD

Marketing Operations Manager

Adam (Susskind) Wolven



Thank you for consistently following up.

Dirk Medema PE, CFM
City of Citrus Heights